

CALYPSO A-FRAME LADDER



313 Regina Avenue
Rahway, NJ 07065-4891
732-574-1500



Model: LG AF CL



GENERAL

Before you start, check to see that you have the correct number of parts. Use the packing list on the next page. Carefully read through and understand all the assembly steps before starting assembly.

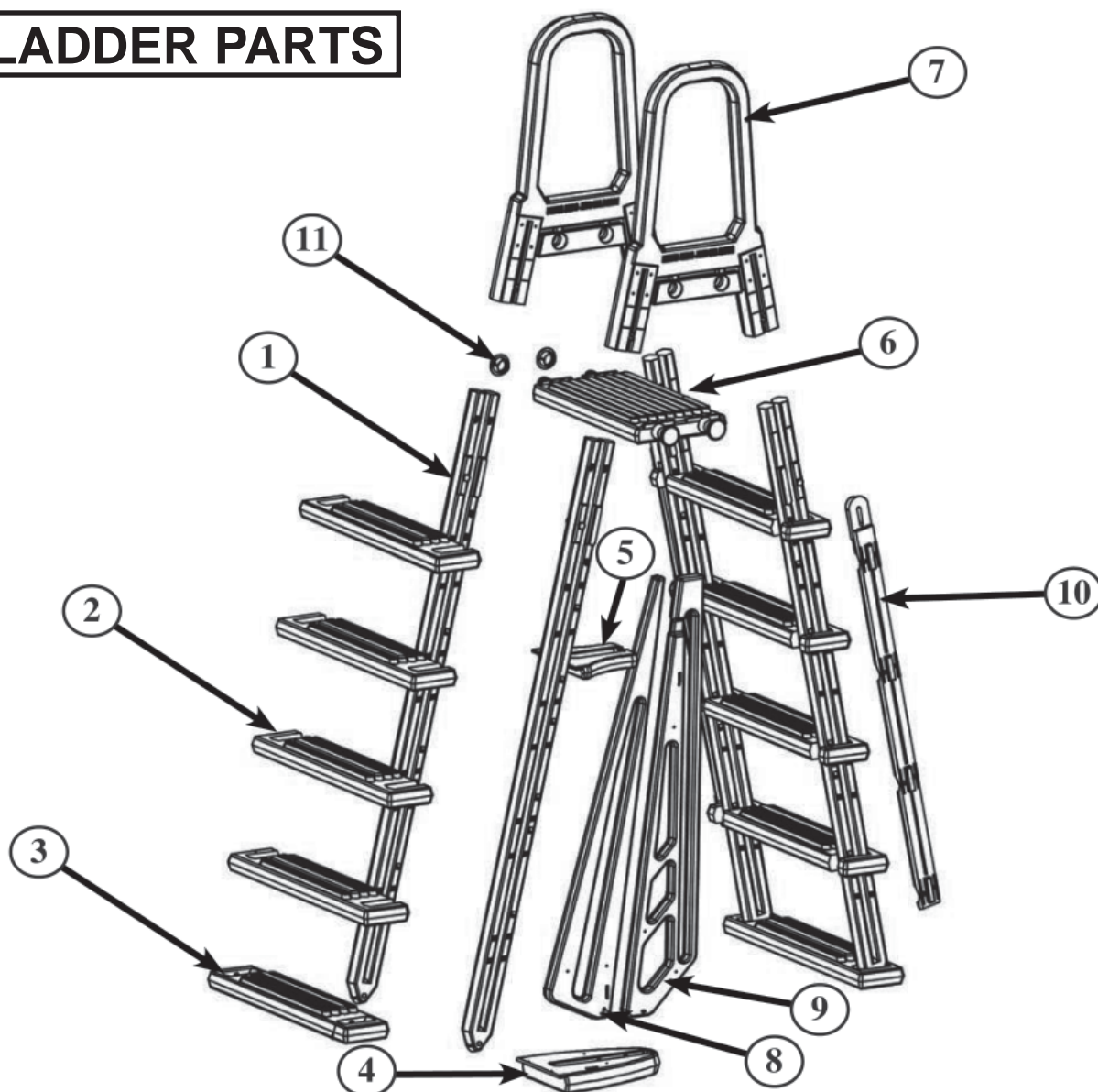
NOTE: LyfGard as a manufacturer reserves the right to revise, change, or modify construction of its products.



DO NOT DIVE OR JUMP INTO YOUR POOL. Your pool is approximately 4' deep. It is not designed for diving or jumping. If you dive or jump into your pool you run the risk of permanent injury or death. Alert all visitors and family of this and point out all warning labels supplied.

ADULT SUPERVISION REQUIRED

LADDER PARTS

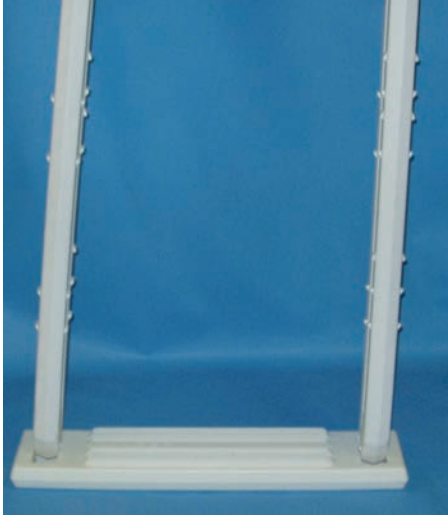


TOOLS REQUIRED

- Drill with 5/16" drill bit
- Small rubber mallet or hammer w/piece of wood
- Phillips head screwdriver or screw gun
- Pliers
- Spray lubricant or liquid soap
- 40 Lbs. of Sand (Sold separately)
- Funnel
- Hacksaw

Part #	Model #	Description	Qty
1	AC MKLEG	Molokai Leg	4
2	AC MKSTEP	Upper Step	8
3	AC BTSTEP	Bottom Step	2
4	AC 01126	Lower Base	1
5	AC 01125	Upper Brace	1
6	AC PLATFORM	Platform	1
7	AC 01127	Calypso Handrail	2
8	AC 01124	Small Barrier	1
9	AC 01123	Large Barrier	1
10	AC STEPCONL	Step Connector (L)	1
	AC STEPCONR	Step Connector (R)	1
11	AC LOCKCAP	Locking Caps	4
12	AC 01128	Calypso Hardware Bag	1
13	AC 12001	48" Mounting Kit	1
14	AC 12002	52" & 54" Mounting Kit	1

STEP 1



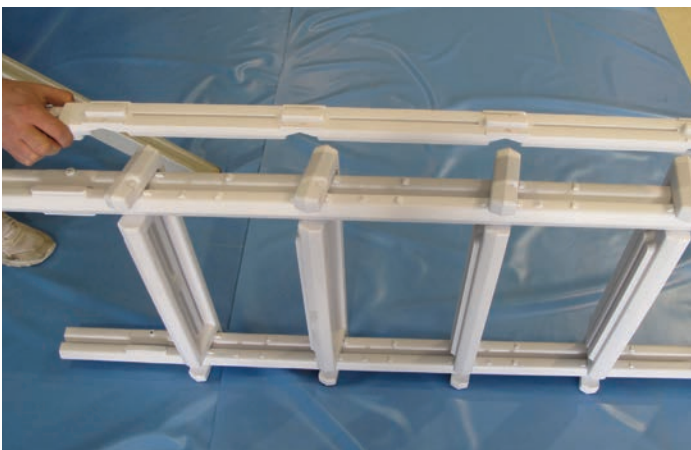
- Place the bottom step (**AC BTSTEP**) on a level surface with indentations facing up.
- Take leg (**AC MKLEG**) and stand upright (pointy side down). When installed on bottom step, the leg will need to have the raised areas facing inward. The raised area with the pre-drilled screw hole should be at the front of the ladder toward the top of the leg.
- Place the left leg into the indentation on the left side of the step and push straight down until it clicks into place.
- Repeat above for right leg on right side of step

STEP 2

- There are two sets of lug locations on the legs (**AC MKLEG**) in the areas where each step will be installed. Each step should be installed into the UPPER set of lugs only.
- Locate one of the four groups of lugs and slide step (**AC MKSTEP**) into the set of lugs on the legs so it clicks into place.
- Repeat for each of the remaining **(3)** steps.
- Secure the top step **ONLY** by screwing (1) #10 x 1-1/4" screw into each side of the step through the pre-marked leg openings.



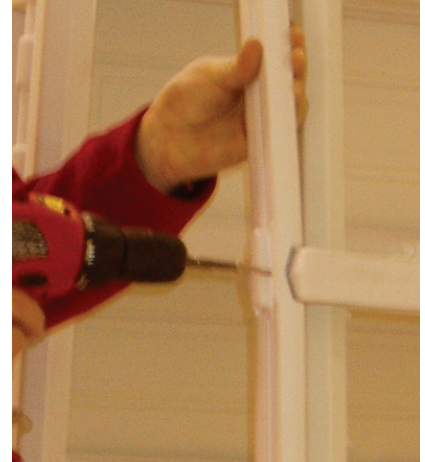
STEP 3



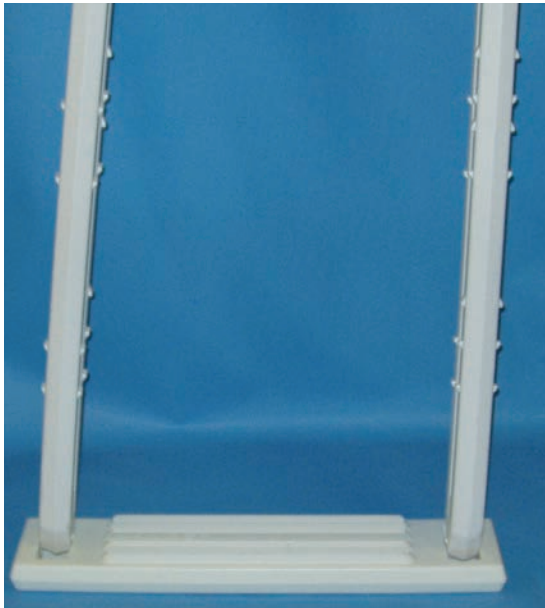
- Locate step connectors (**AC STEPCONL** and **AC STEPCONR**) which will be installed to hold the steps in place. There is a right and a left step connector, **they are NOT interchangeable**. The angle of the connector will allow for installation on only **ONE** side of the steps. Check the top of the connectors for the raised left and right markings.
- Line up rounded area of left step connector with pre drilled hole at top of leg. Remember, only one of these connectors will fit properly on the left side.

STEP 3 CONT.

- Place washer on bolt and insert from **INSIDE** of ladder thru leg and step connector. Insert a second washer on end of bolt and screw on nut. Do not over tighten.
- Repeat above steps for the right step connector with the remaining bolt, washers and nut.
- To attach step connectors to steps, secure with **(2)** #10 x 1/4" screw through each pre-marked openings on the step connectors into steps on left and right sides, except top step.
- Once completed set this half of the ladder aside and proceed to **STEP 4**.



STEP 4



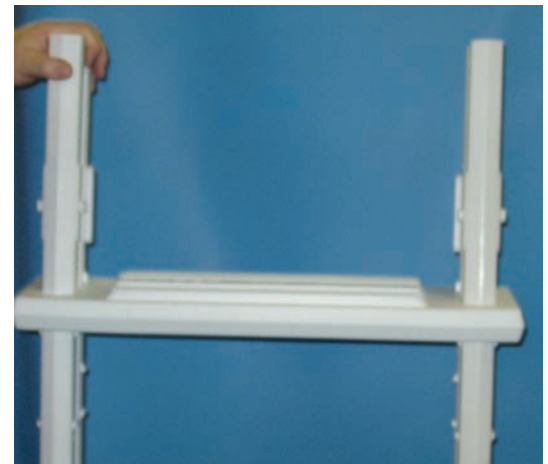
NOTE STEP 4 IS SIMILAR TO STEP 1

- Place the bottom step (**AC BTSTEP**) on a level surface with indentations facing up.
- Take leg (**AC MKLEG**) and stand upright (pointy side down). When installed on bottom step, the leg will need to have the raised areas facing inward. The raised area with the pre-drilled screw hole should be at the front of the ladder toward the top of the leg.
- Place the left leg into the indentation on the left side of the step and push straight down until it clicks into place.
- Repeat above for right leg on right side of step

STEP 5

- There are two sets of lug locations on the legs (**AC MKLEG**) in the areas where each step will be installed. Each step should be installed into the **UPPER** set of lugs only.
- Locate one of the four groups of lugs and slide step (**AC MKSTEP**) into the set of lugs on the legs so it clicks into place.
- Repeat for each of the remaining **(3)** steps.
- Secure **ALL STEPS** by screwing **(1)** #10 x 1-1/4" screw into each side of the step through the pre-marked leg openings.

NOTE No Step Connectors are used in this step



STEP 6



- Place the Lower Base (**AC 01126**) on a level surface.
- Snap Large Barrier (**AC 01123**) into the groove on the lower base facing round edge.
- Snap Small Barrier (**AC 01124**) into the groove on the lower base facing the straight side.

- Slide Upper Brace (**AC 01125**) over Small Barrier as shown.



- Slide Upper Brace (**AC 01125**) through the groove in the Large Barrier and push down lightly to secure.

- Screw Lower Base of Entrapment Barrier into bottom step of the Inside Portion of the Ladder with (2) #10 x 1-1/4" screws. (This is the side **WITHOUT FLIP UP STEPS!**)



STEP 6 CONT.



- Screw Upper Brace of Entrapment Barrier into the third step of the Inside Portion of the Ladder with (2) #10 x 1-1/4" screws.
(This is the side **WITHOUT FLIP UP STEPS**!)

FOR 52" POOLS CONTINUE WITH STEP 7
FOR 48" POOLS SKIP TO STEP # 8
FOR 54" POOLS SKIP TO STEP # 9

STEP 7

52" POOLS

- This ladder is designed to fit multiple pool heights. **ONLY FOLLOW THIS STEP IF YOUR POOL HEIGHT IS 52"**.
- Locate the first line on the Handrail (**AC 01127**) of the ladder.
- Using a hacksaw cut the Handrail evenly through both sides.



STEP 8

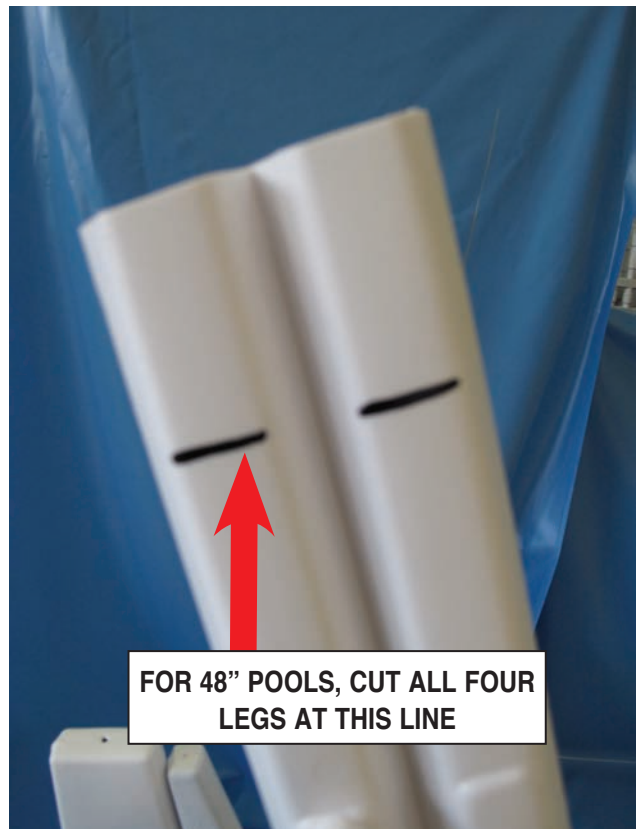


48" POOLS

- This ladder is designed to fit multiple pool heights. **ONLY FOLLOW THIS STEP IF YOUR POOL HEIGHT IS 48"**.
- Locate the second line on the Handrail (**AC 01127**) of the ladder.
- Using a hacksaw cut the Handrail evenly through both sides.

- This Ladder is designed to fit multiple pool heights. **ONLY FOLLOW THIS STEP IF YOUR POOL HEIGHT IS 48"**.
- Locate the leg (**AC MKLEG**) on both assembled sides of the ladder.
- Find the line towards the top of the leg.
- Using a hacksaw cut all four (4) legs evenly.

48" POOLS



FOR 54" POOLS NO MODIFICATIONS ARE NECESSARY

STEP 9



FILL LEGS WITH SAND
USING A FUNNEL



- Locate the interior portion of the ladder. This is the portion of the ladder that has the entrapment barrier attached to it.
- Using a funnel fill both legs with sand. Use approximately 20 Lbs. of sand in each leg.

STEP 10

- Lay one handrail (**AC 01127**) on a flat surface and push the connected dowels of the platform into the openings on the handrail until fully seated. Make sure treads of platform are facing upward.
- Attach the second handrail (**AC 01127**) to the platform the same way.



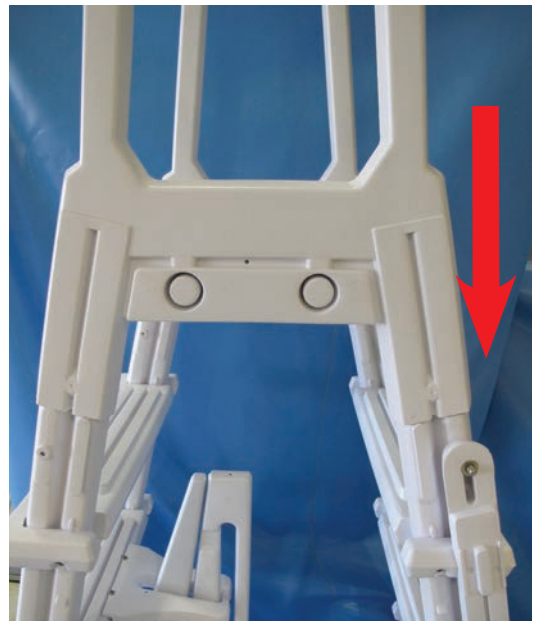
STEP 10 CONT.



- Center locking cap (**AC LOCKCAP**) over opening on side of handrail where platform was just attached. Using a rubber mallet or a hammer and a small piece of wood, tap on cap until the cap is flush with the Handrail.
- Repeat for each of the remaining **(3)** locking caps.

STEP 11

- Coat the tops of the legs with Blue Seal™ O-Ring Lube or liquid soap and attach handrails by pushing them down over the legs.



- Secure all handrails (**AC 01127**) to the legs with **(4)** #10 1-1/4" screws through each of the pre-marked openings.

STEP 12

- Place assembled ladder inside the pool where you would like to enter and exit. The entrapment barrier should be inside of the pool.
- Once the ladder is placed in the pool, tip the ladder forwards and backwards and side to side to release any air that may be trapped inside.



NOTE

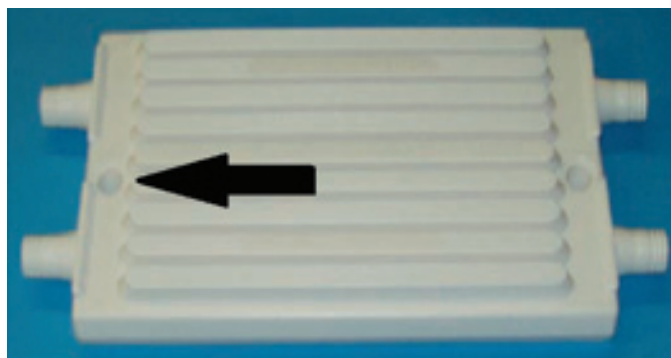
When a Ladder is installed it is recommended that a Step Mat be installed underneath the bottom step (as shown).

THIS ITEM IS SOLD SEPARATELY.



STEP 13

- All pool ladders are required to be secured to the frame of the pool.
 - There are **2 OPENINGS** in the platform of the ladder.
-
- Line the two holes up on the top rail of the pool. With a fine tip marker mark the location of the holes.
 - Using a 5/16" drill bit, drill two holes in the ledge of the pool.
 - For 48" pools use mounting kit **AC 12001**. This consists of (2) 5" bolts, nuts and washers.
 - For 52" pools use mounting kit **AC 12002**. This consists of (2) 2-1/2" bolts, nuts and washers.
 - For 54" pools use mounting kit **AC 12002**. This consists of (2) 2-1/2" bolts, nuts and washers.
 - Attach the ladder to the pool sliding the mounting hardware through the platform
 - Tighten the nut and make sure the ladder is secure.



SAFETY INFORMATION

- To avoid injury when lifting heavy or awkward loads, it is suggested that two people lift the object.
- **DO NOT** use the pool entry system for any purpose other than that for which it is intended.
- Maximum weight on steps should **NOT EXCEED 250 lbs.**



WARNING

Exceeding the recommended weight limit may cause the step to fail and may result in injury.

LADDER SWINGS UP AND LOCKS IN PLACE



NOTE You have purchased a Flip-up Ladder. When the pool is not in use the ladder should be flipped up and locked into place by pushing down on the step portion of the ladder.

MAINTENANCE

- Step/ladder/bridges must be removed for winter. Failure to do so can cause the step to crack.
- When removing step/ladder/bridges for winter, it is recommended that you spray down step with hose water to rinse off any chemical residual prior to storing.
- When storing step/ladder/bridges for winter, it should be protected from the elements and stored either in a shed or garage, or covered with a tarp.



REGISTRATION

313 Regina Avenue, Rahway, New Jersey 07065-4891
Phone (732) 574-1500 • Fax (732) 574-1551
info@swimnplay.com • www.swimnplay.com

FIVE YEAR LIMITED WARRANTY

Your ladder has been designed and manufactured under strict quality control procedures to insure your full enjoyment and continuing satisfaction. This warranty entitles the purchaser to the following protection. Structural components are warranted to be free from defects in workmanship for a period of **FIVE (5) YEARS** from the date of purchase.

In the event there is a workmanship defect in the structural components within a period of 5 years from the date of purchase, the manufacturer will replace or repair, at its option, any such defective components in accordance with the following schedule and procedure.

1. A season ends on December 31st of each calendar year. Any claim must be accompanied by dated proof of purchase.
2. All claims under this warranty must be directed to the Customer Service Department at the company's address. A "Return Authorization" will be issued within 20 days of receipt of notification in writing, that a claim is to be presented under this warranty. A component assumed to be defective must be returned to the factory with the defect clearly marked. The component must be clean and dry, packaged so as not to permit damage in transit, freight prepaid, and if found to be defective by the factory will be replaced or repaired in accordance with the percentage schedule. The company will notify the purchaser of its determination regarding all claims presented under this warranty within 40 days of receipt of the component, assumed to be defective by the purchaser.
3. The retail price shall be the manufacturer's suggested retail price effective at the time of replacement. Should a component be found defective, the factory will return the replacement component to the purchaser, freight prepaid. The manufacturer shall not be responsible for any labor required to remove or replace any component, nor shall the manufacturer be responsible for the cost of any water replacement and/or any incidental or consequential costs or damages.
4. The manufacturer will endeavor in good faith to maintain a supply of replacement parts for this ladder. The manufacturer reserves the right to make substitutions. The manufacturer shall not be liable to supply parts that are out of production or unavailable.
5. Failure of the purchaser to comply with the written instructions or with the care and maintenance requirements outlined in the instruction manual packaged with the ladder, or failure of the purchaser to allow the manufacturer's representative or dealer to inspect components claimed defective, shall render the limited warranty made hereunder null and void, and all owners' warranty rights shall terminate. This limited warranty is null and void if alteration is made in the design, or unauthorized components are used.

6. To validate this limited warranty, the ladder must be registered with the manufacturers Customer Service Department by providing all the information required on the attached card which must be mailed within fifteen (15) days of installation or within six (6) months of purchase, whichever occurs earlier. All subsequent claims must be made in writing and must refer to the warranty registration number on the limited warranty.
7. No agent, dealer, salesman, or other individual is authorized to change or modify this limited warranty, and such changes or modifications will not be recognized by the manufacturer.
8. The manufacturer does not employ installers, and it is therefore the purchaser's obligation and duty to obtain qualified installers in accordance with the factory instruction manual.
9. All limited warranties contained herein apply only to the original owner-user and are non-transferrable.
10. This limited warranty gives you specific legal rights. You also have an implied warranty right. In the event of a problem with warranty service or performance, you may be able to go to a Small Claims Court, a State Court, or a Federal District Court.
11. This limited warranty does not cover damage caused by misuse, negligence, acts of God, improper installation, vandalism or commercial use.

Percentage Of Retail Price To Be Paid By Original Purchaser

During the First Season	0%
During the Second Season.	20%
During the Third Season.	40%
During the Fourth Season	60%
During the Fifth Season	80%

SAFETY PRECAUTIONS

IMPORTANT - FOR YOUR HEALTH and SAFETY - PLEASE NOTE.

This ladder is not for diving. Do not dive. Do not jump. Do not allow others to dive or jump from this ladder. Diving is dangerous and can cause permanent physical injury or death. Prevent accidents by prohibiting horseplay and unnecessary roughness in the pool or pool area.

Proper warning signs are provided with your ladder and must be displayed prominently.

This warranty herein sets forth the entire liability against the manufacturer, and it shall not be liable for any other charges or incidental or consequential costs or damages incurred by the purchaser by reason of the occurrence of defects against which this warranty is made. This warranty hereby made is intended to be in lieu of any and all warranties expressed or implied, of merchantability or otherwise, and no other warranties are made or may be implied.



